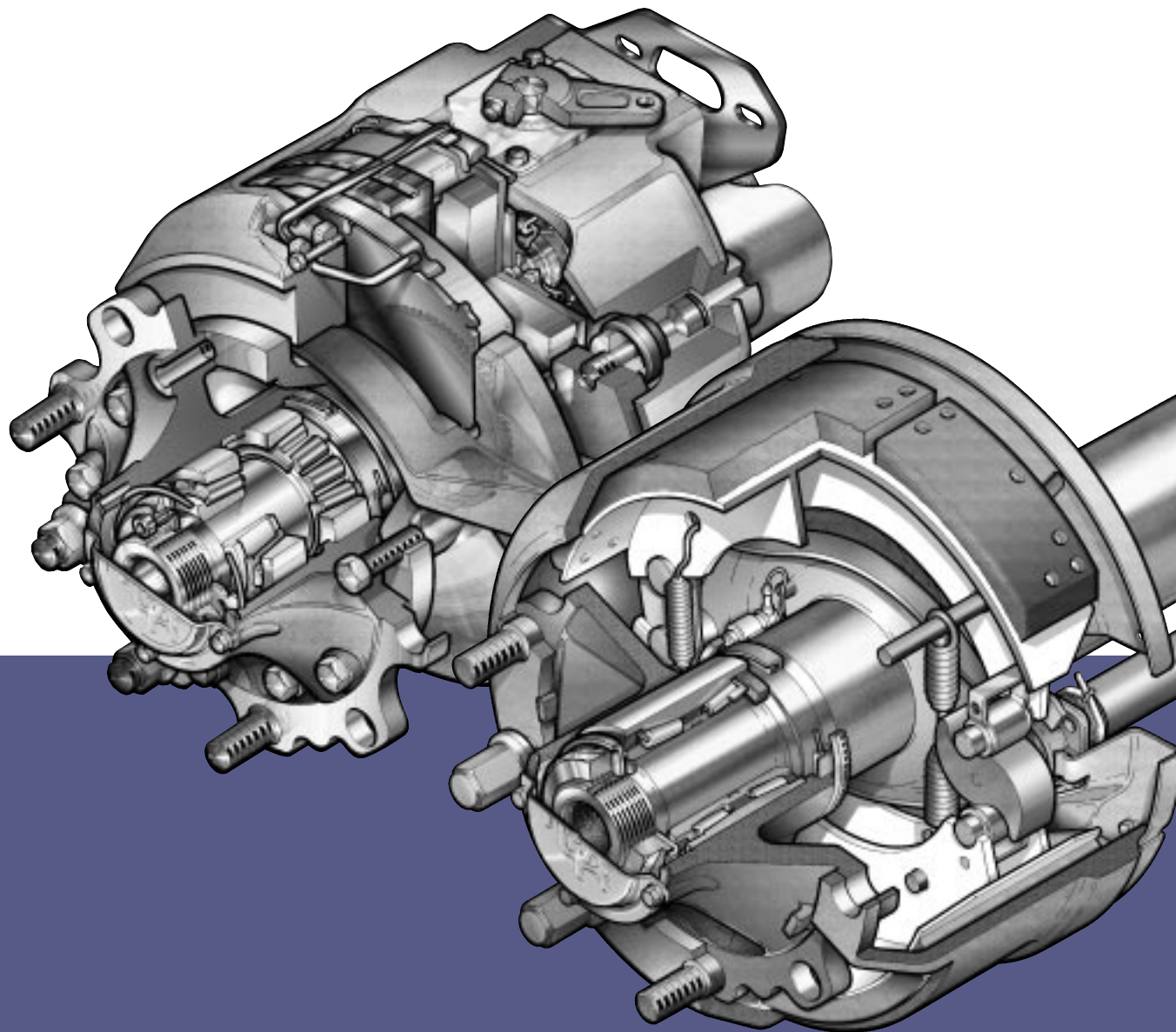




an **ArvinMeritor** brand

Meritor Axle & Brake Parts List

LM and LMC Series Axles including Disc and Drum Brake variants

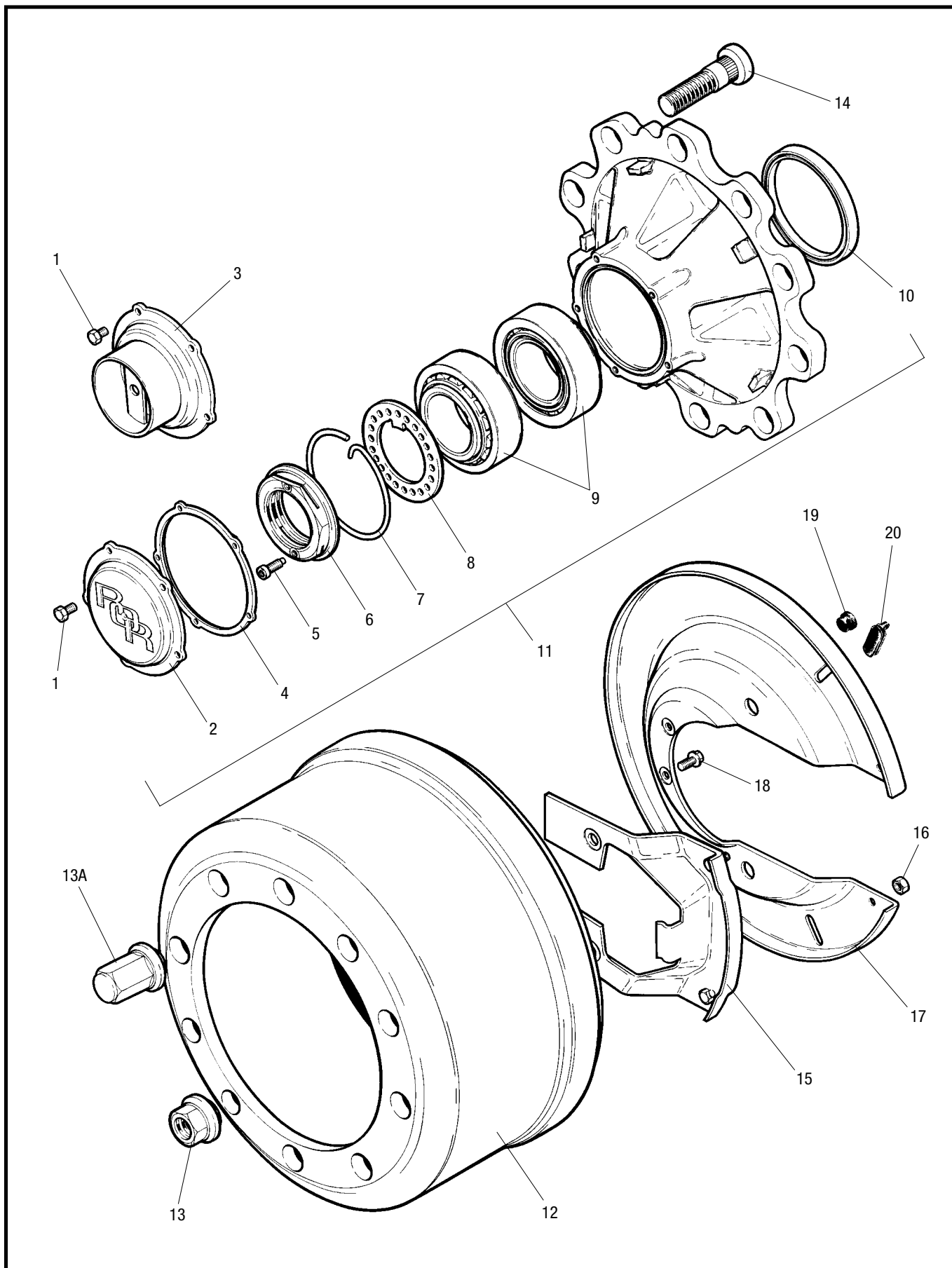


ArvinMeritor[™]



an ArvinMeritor brand

LM Parts List





an ArvinMeritor brand

LM Parts List

LM Hub Assembly Parts List

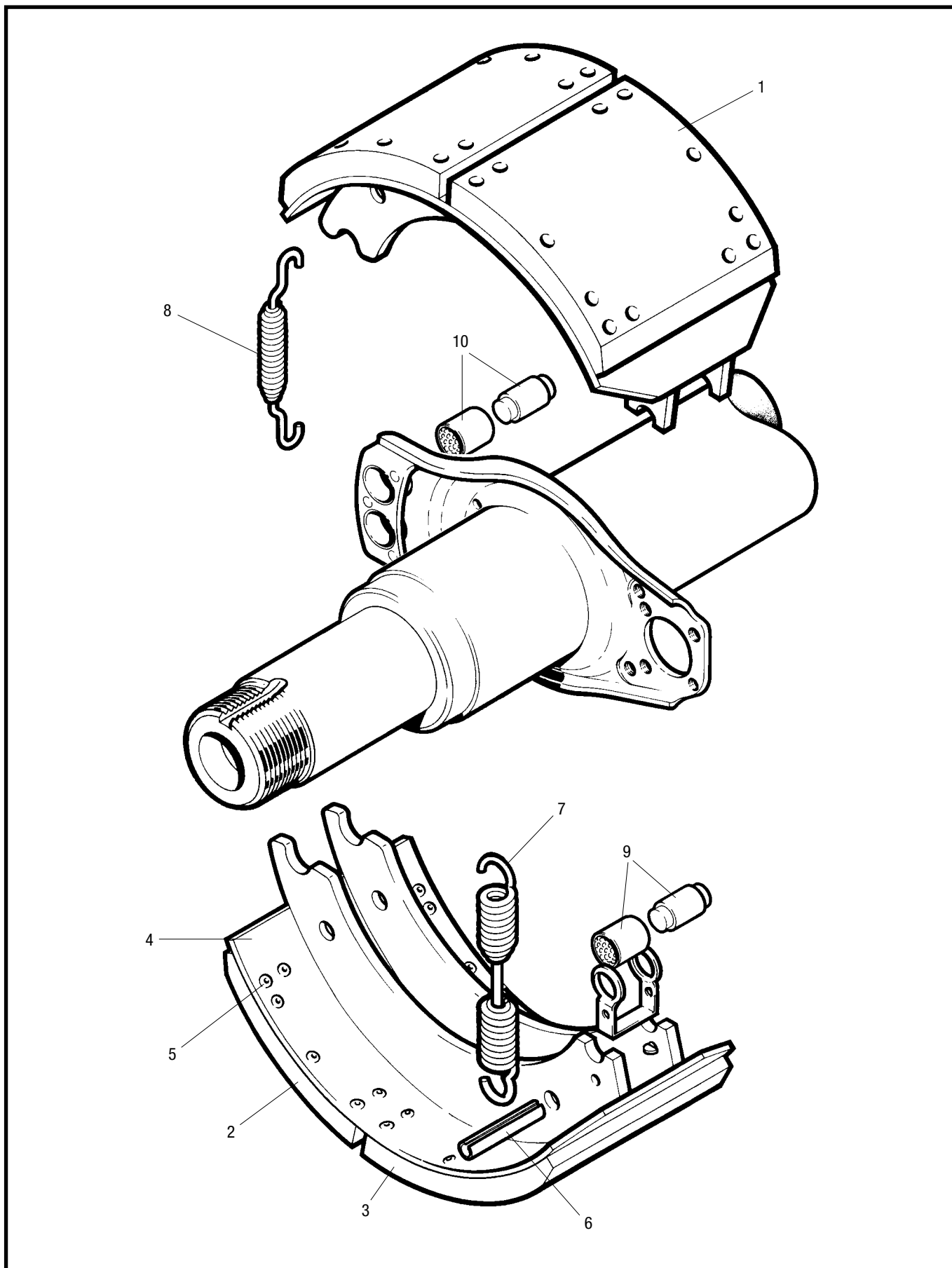
Item	Description	Part Number
1	Screw, Hub Cap	99543001
2	Hub Cap	21224673
3	Hub Cap – Hubodometer	21224904
4	Gasket, Hub Cap	21224759
5	Screw, Pinch Nut	21224864
6	Pinch Nut	21224762
7	Retaining Clip	21224865
8	Retaining Washer	21224669
9	Bearings	99041075
10	Oil Seal	21200321A
11	Hub Assembly	14224748
12	Brake Drum	21220183V
13	Wheel Nut	see table below
14	Wheel Bolt, Steel Wheel	21220132
14	Wheel Bolt, Aluminium Wheel	21220969
14	Wheel Bolt, Universal Steel/Aluminium, Coated, (use with Dacromet Wheel Nut)	21226339
15	Filler Plate – for axles manufactured before April 2001	15224518
15	Filler Plate – for axles manufactured after April 2001	15225842
16	Nut, Filler Plate	99544000
17	Dust Cover	21224522
18	Screw, Dust Cover	99546002
19	Plug, Blanking	21211385
20	Plug, Inspection	21220719
21	400g Cartridge MERITOR Hub Grease (not shown)	99538007
22	100g Tube Optimol Optimoly White Paste T (not shown)	99538009

WHEEL NUTS 32mm ACROSS FLATS			
NEW PART NUMBER	REPLACES EXISTING NUMBERS	TYPE	FINISH COATING
21226395	21218643 / 21218644	STANDARD OPEN	PHOSPHATE & OIL
21226396	21225528 / 21225529	STANDARD OPEN	DACROMET 500 & OIL
21226397	21218645 / 21218621	CLOSED END	PHOSPHATE & OIL
21226484	N/A	CLOSED END	DACROMET 500 & OIL



an ArvinMeritor brand

LM Parts List



LM Parts List

LM Brake Assembly Parts List

Item	Description	Part Number
1	Brake Shoe Lined Assembly	15224952R
2	Brake Lining, Anchor End	21224717R
3	Brake Lining, Cam End	21224718R
4	Brake Shoe Assembly, Welded	15224724S
5	Rivet	21200761
6	Roll Pin	21220171
7	Return Spring	21221224
8	Retaining Spring	21205194
9	Cam Roller Assembly	15226262
10	Anchor Pin and Bush Assembly	15226632
*11	25g Sachet MERITOR Brake Grease (not shown)	99226786

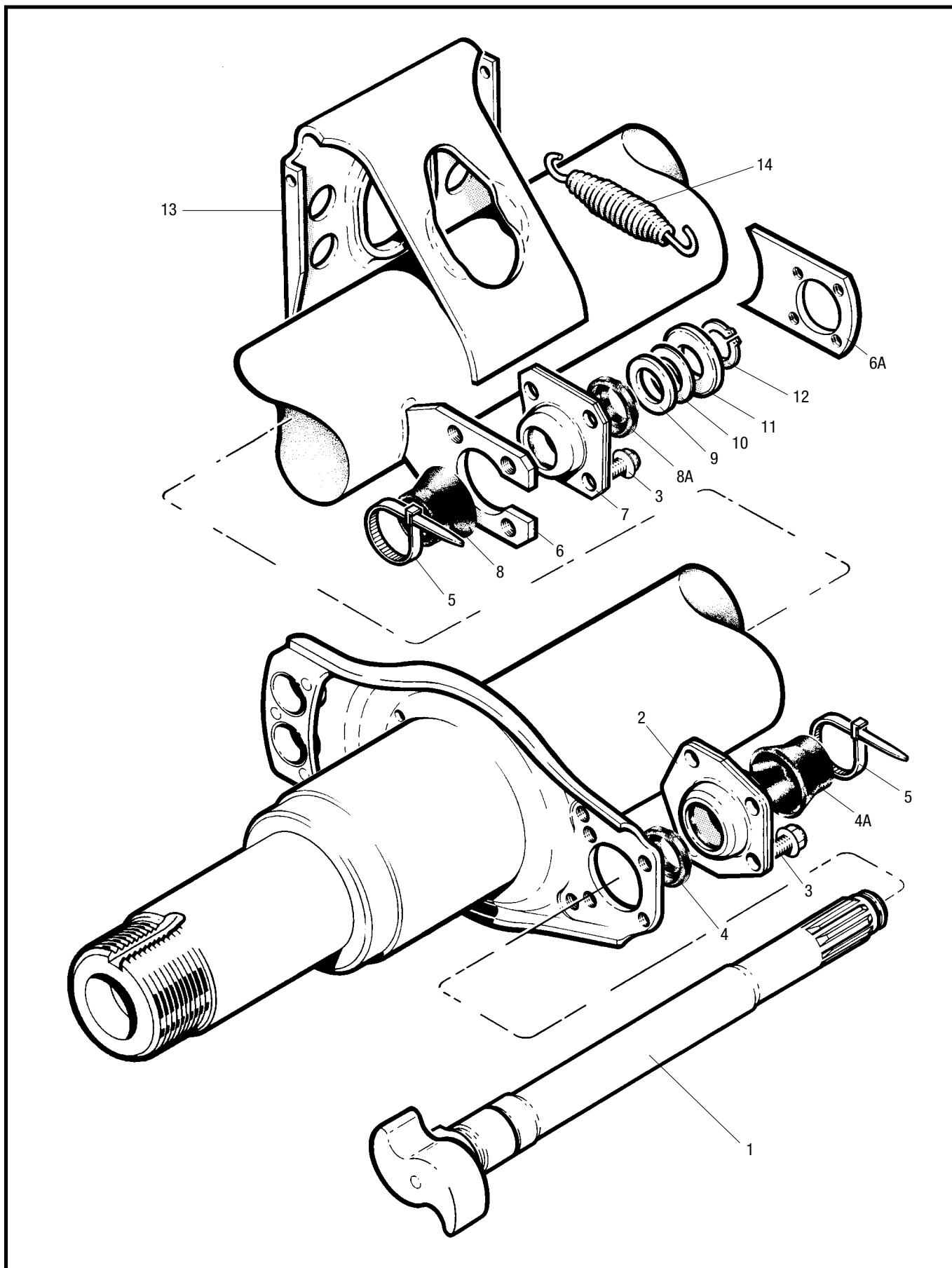
*Must be used with items 9 and 10.

NB. Items 9 and 10 must be used as a matched set, individual components are not interchangeable with old style parts.



an ArvinMeritor brand

LM Parts List

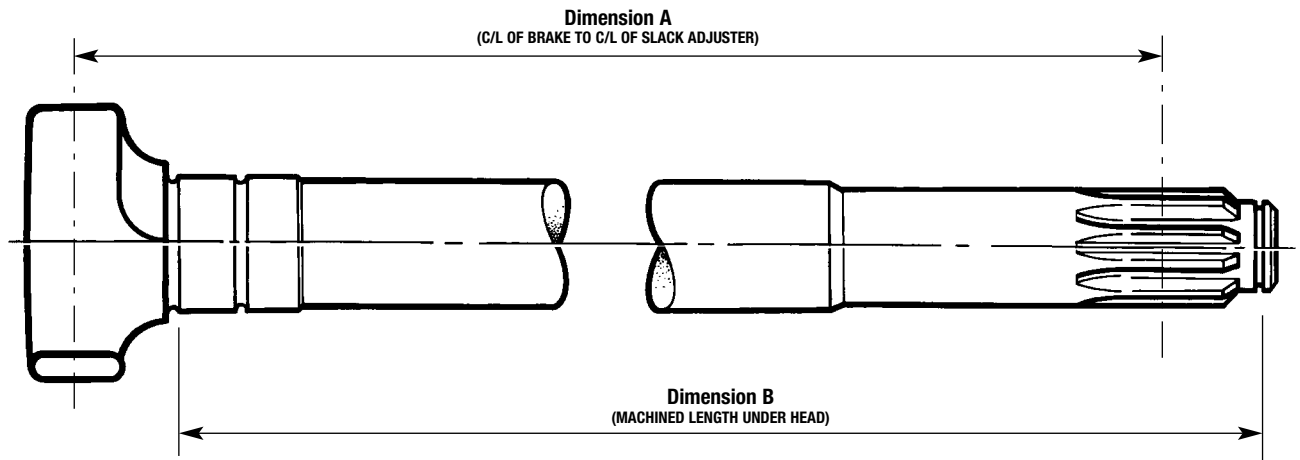


LM Parts List

LM Camshaft Assembly Parts List – up to April 2001

Item	Description	Part Number
1	Camshaft LH/RH	See table below
2	Cam Head Bearing Assembly	15224821
3	Screw, Bearing	99546001
4	Inner Boot, Cam End	21224729
4A	Outer Boot, Cam End	21224730
5	Tie Wrap	21221065
6	Camshaft Bracket	21220982
6A	Camshaft Bracket (axles built after Sept '99)	21020300
7	Spline End Bearing Assembly	15213430
8	Inner Boot, Spline End	21204849
8A	Outer Boot, Spline End	21205667
9	Washer, Spacing, Thick	21006627
10	Washer, Spacing, Thin	21006662
11	Retaining Washer	21219862
12	Circlip	99507030
13	Air Chamber Bracket	21221004
14	Assister Spring	21210215
15	25g Sachet MERITOR Grease (not shown)	99226786

NB. Item 15 must be used on items 2 & 7.

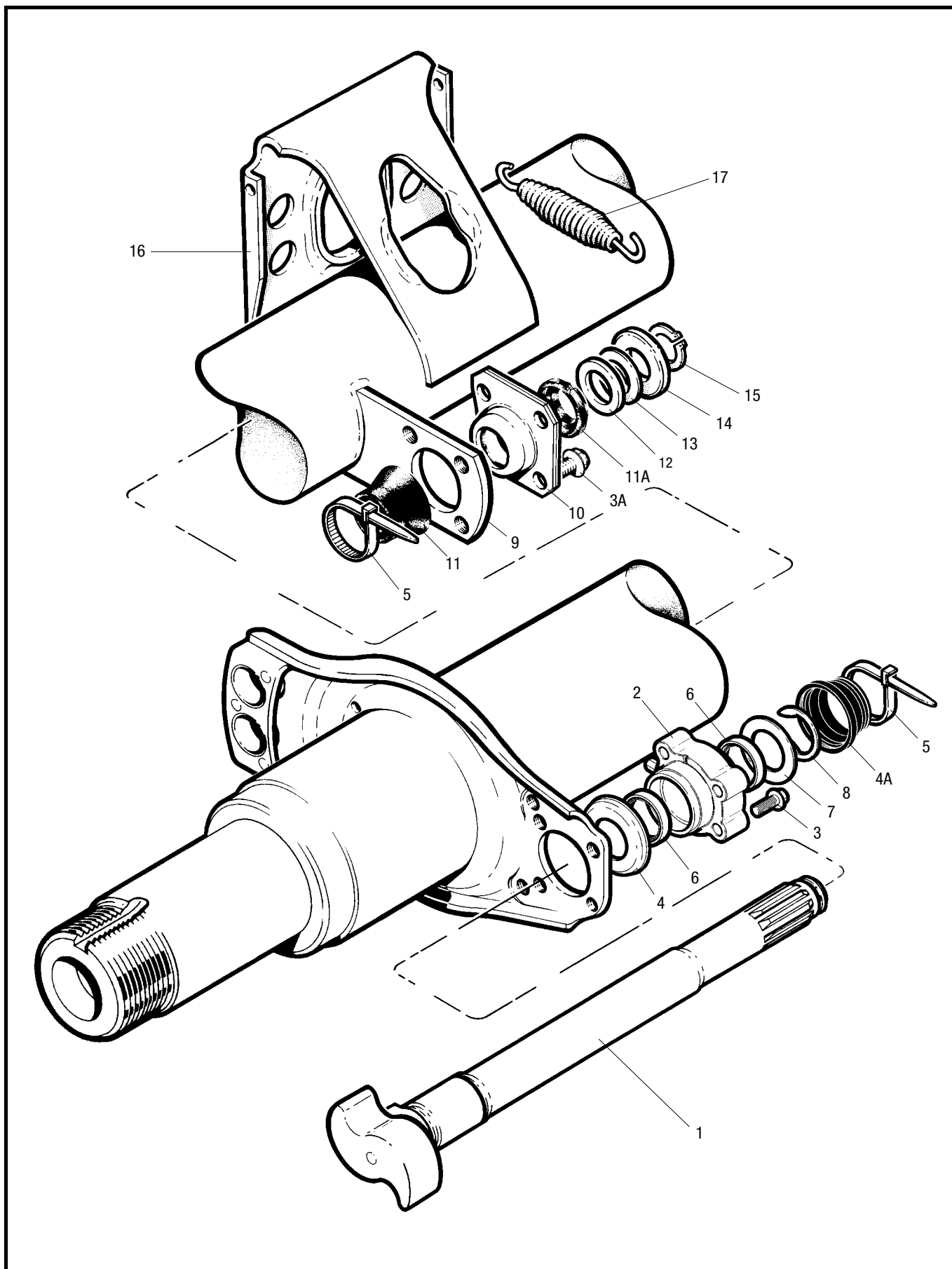


Dimension 'A'	Dimension 'B'	Part Number	
		Right Hand	Left Hand
229.9	232.4	21224857	21224858
253.5	258.0	21224855	21224856
412.2	416.7	21224849	21224850
475.7	480.2	21224847	21224848
521.0	525.5	21224793	21224794
544.5	549.0	21224853	21224854
564.0	568.5	21224851	21224852
583.0	587.5	21224795	21224796
605.5	610.0	21224845	21224846
622.5	627.0	21224843	21224844
632.5	637.0	21224841	21224842
658.8	663.3	21224859	21224860



an ArvinMeritor brand

LM & LMC Service

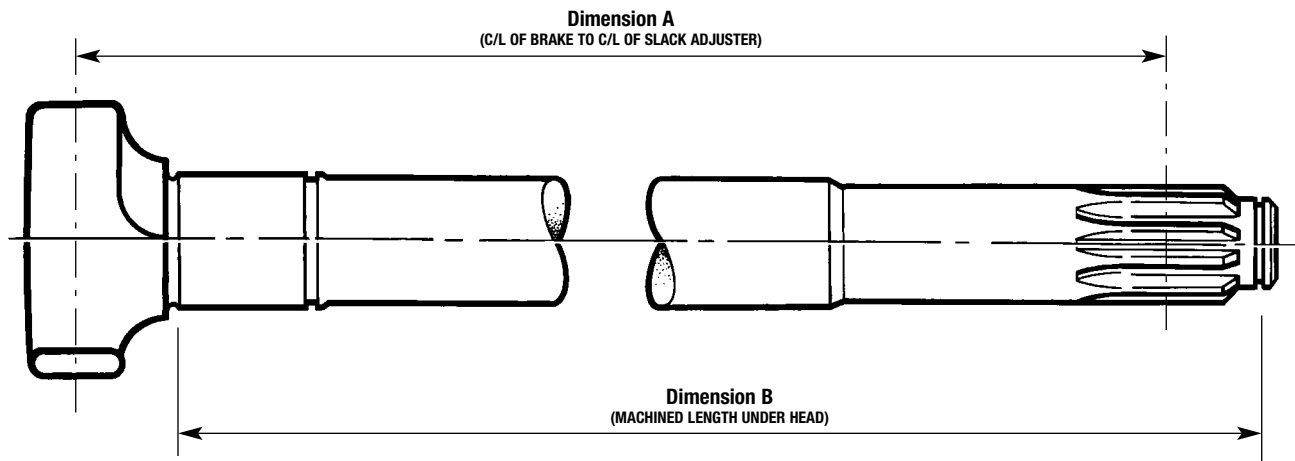


LM & LMC Service

LM Camshaft Assembly Parts List – from April 2001

Item	Description	Part Number
1	Camshaft LH/RH	See table below
2	Cam Head Bearing Assembly	A23105Q1213
3	Screw, Bearing, Cam End	99546000
3A	Screw, Bearing, Spline End	99546001
4	Washer Seal	1229K4795
4A	Boot, Cam End	2260K1155
5	Tie Wrap	21221065
6	Lip Seal	A1205S2645
7	Washer	1229S4101
8	Snap Ring	1229T4102
9	Camshaft Bracket	21020300
10	Spline End Bearing Assembly	15213430
11	Inner Boot, Spline End	21204849
11A	Outer Boot, Spline End	21205667
12	Washer, Spacing, Thick	21006627
13	Washer, Spacing, Thin	21006662
14	Retaining Washer	21219862
15	Circlip	99507030
16	Air Chamber Bracket	21221004
17	Assister Spring	21210215
*18	25g Sachet MERITOR Grease (not shown)	99226786

*NB. Item 18 must be used on items 2 & 10.

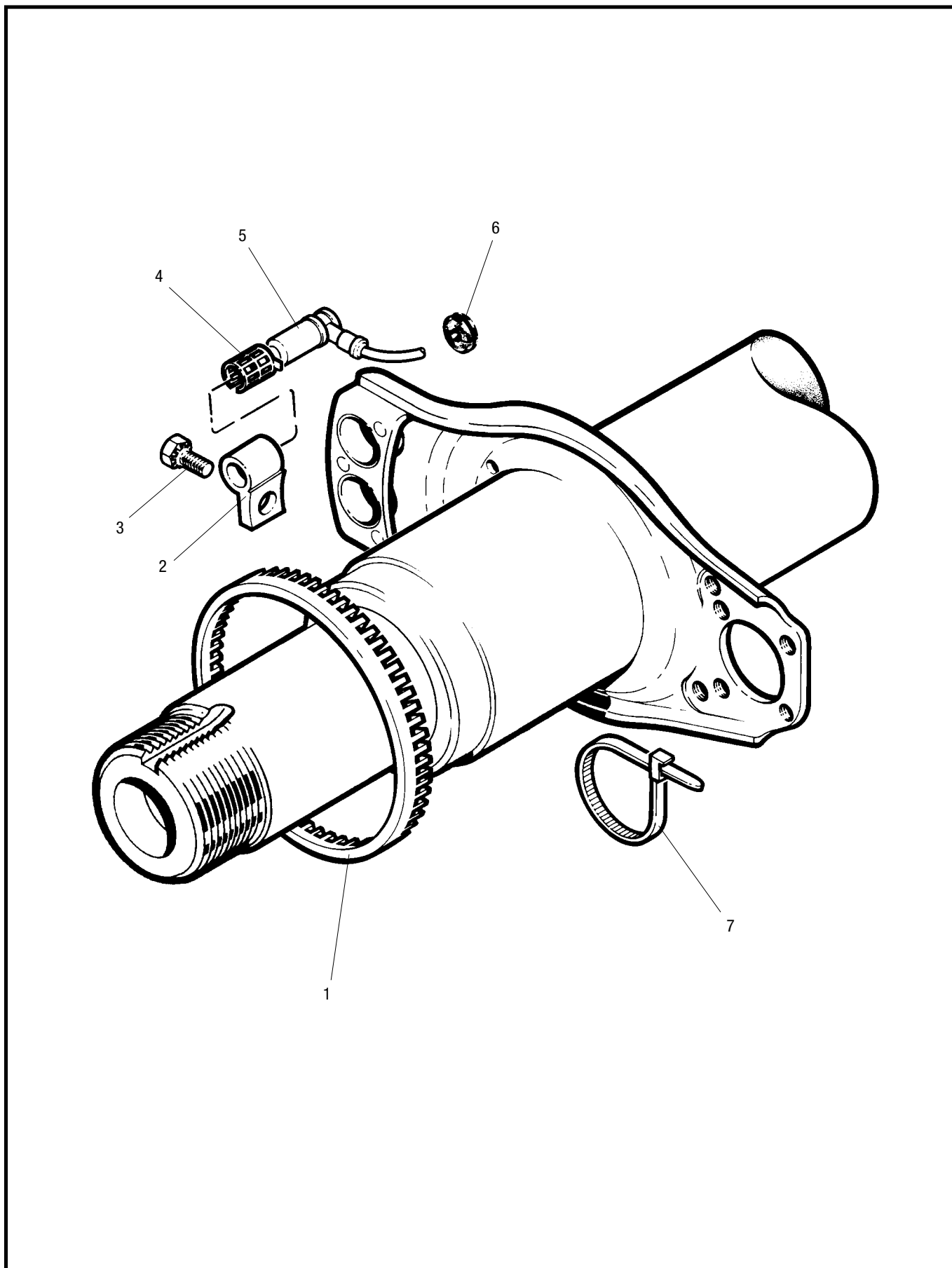


Dimension 'A'	Dimension 'B'	Part Number	
		Right Hand	Left Hand
412.2	416.7	21227086	21227087
521.0	525.5	21227084	21227085
544.5	549.0	21227082	21227083
583.0	587.5	21227080	21227081
605.5	610.0	21227078	21227079
622.5	627.0	21227076	21227077
632.5	637.0	21227074	21227075



an ArvinMeritor brand

LM Parts List



LM Parts List

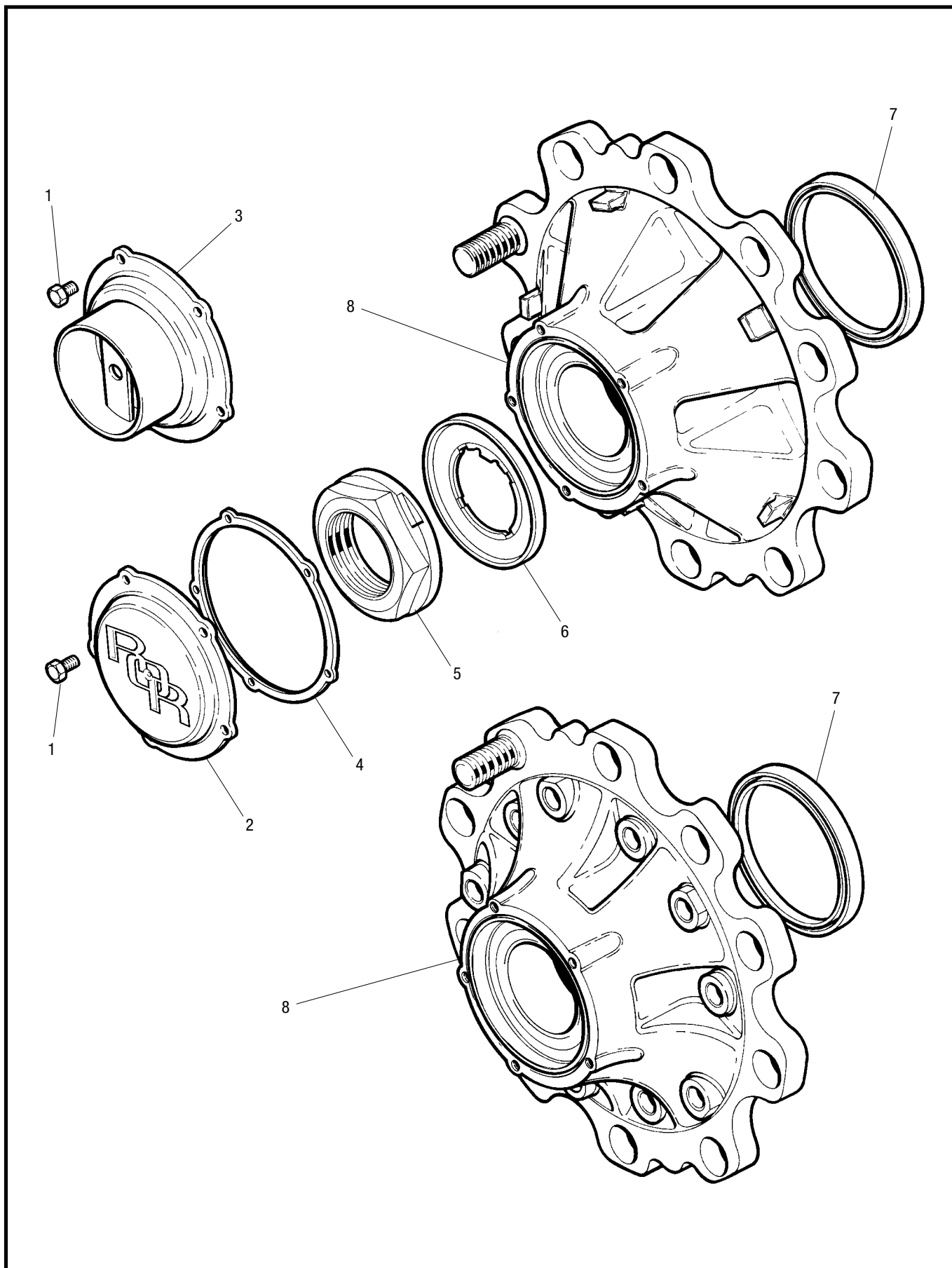
LM ABS Assembly Parts List

Item	Description	Part Number
1	Pole Wheel	21213316
2	Sensor Block	22224705
3	Screw, Sensor Block	99541002
4	Spring Clip	21213036
5	Sensor	21213034
6	Strain Relief Bush	21222319
7	Cable Tie	21221065
8	Grease for Sensor Bush (not shown)	99226786



an ArvinMeritor brand

LMC Parts List



LMC Parts List

LMC Hub Assembly Parts List

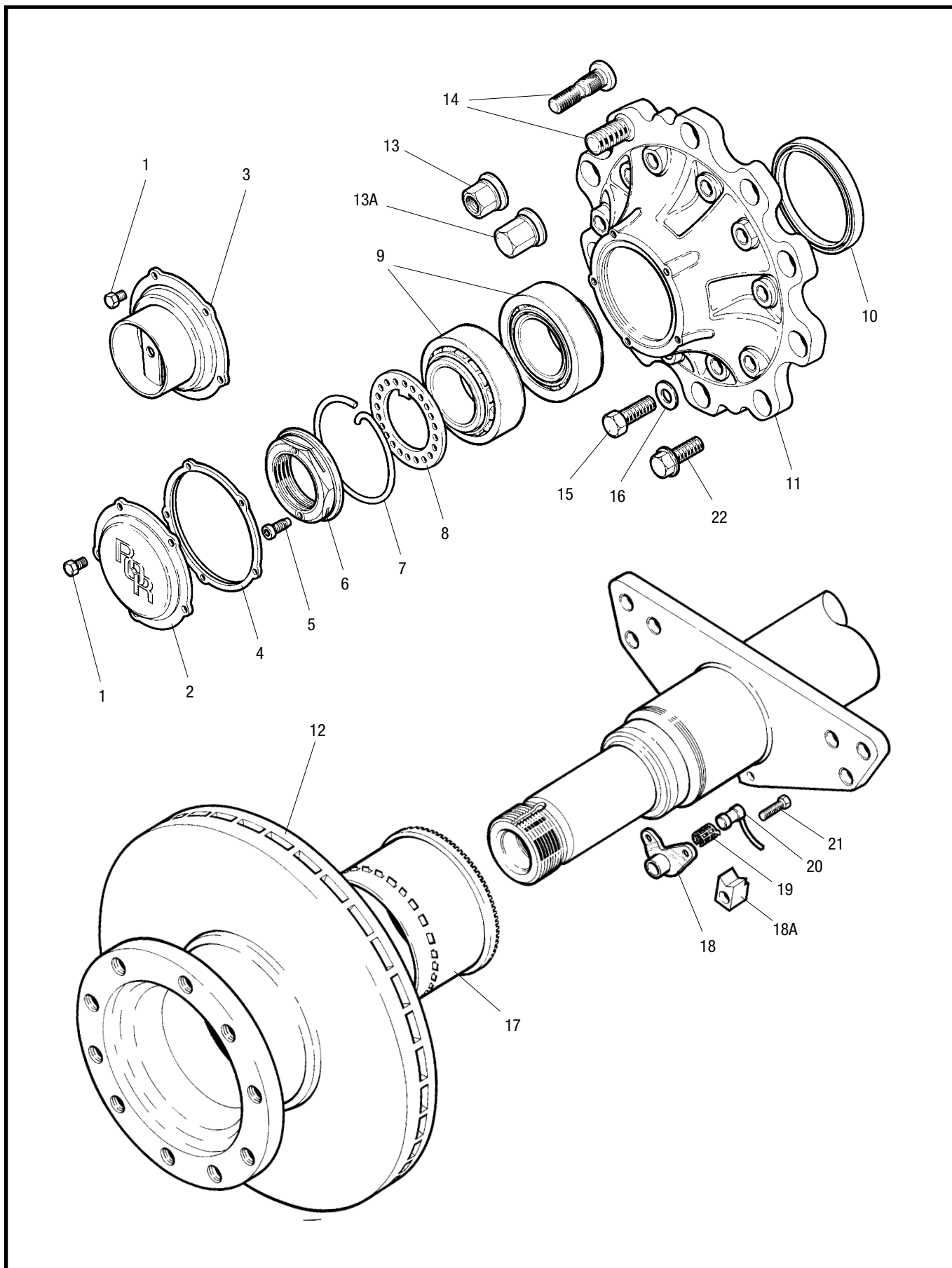
Item	Description	Part Number
1	Screw, Hub Cap	99543001
2	Hub Cap	21224673
3	Hub Cap – Hubodometer	21224904
4	Gasket, Hub Cap	21224759
5	Axle End Nut	21225405
6	Stake Washer Assembly	21225514
7	Auxiliary Oil Seal	21200321A
8	Hub Assembly – LMC Drum Brake	14225290
8	Hub Assembly – LMC DX195 Disc Brake	14225494

For all other axle & brake components refer to the relevant LM or LM DX195 Series Parts Lists.



an ArvinMeritor brand

LM DX195 Parts List



LM DX195 Parts List

LM DX195 Hub, Rotor and ABS Parts List

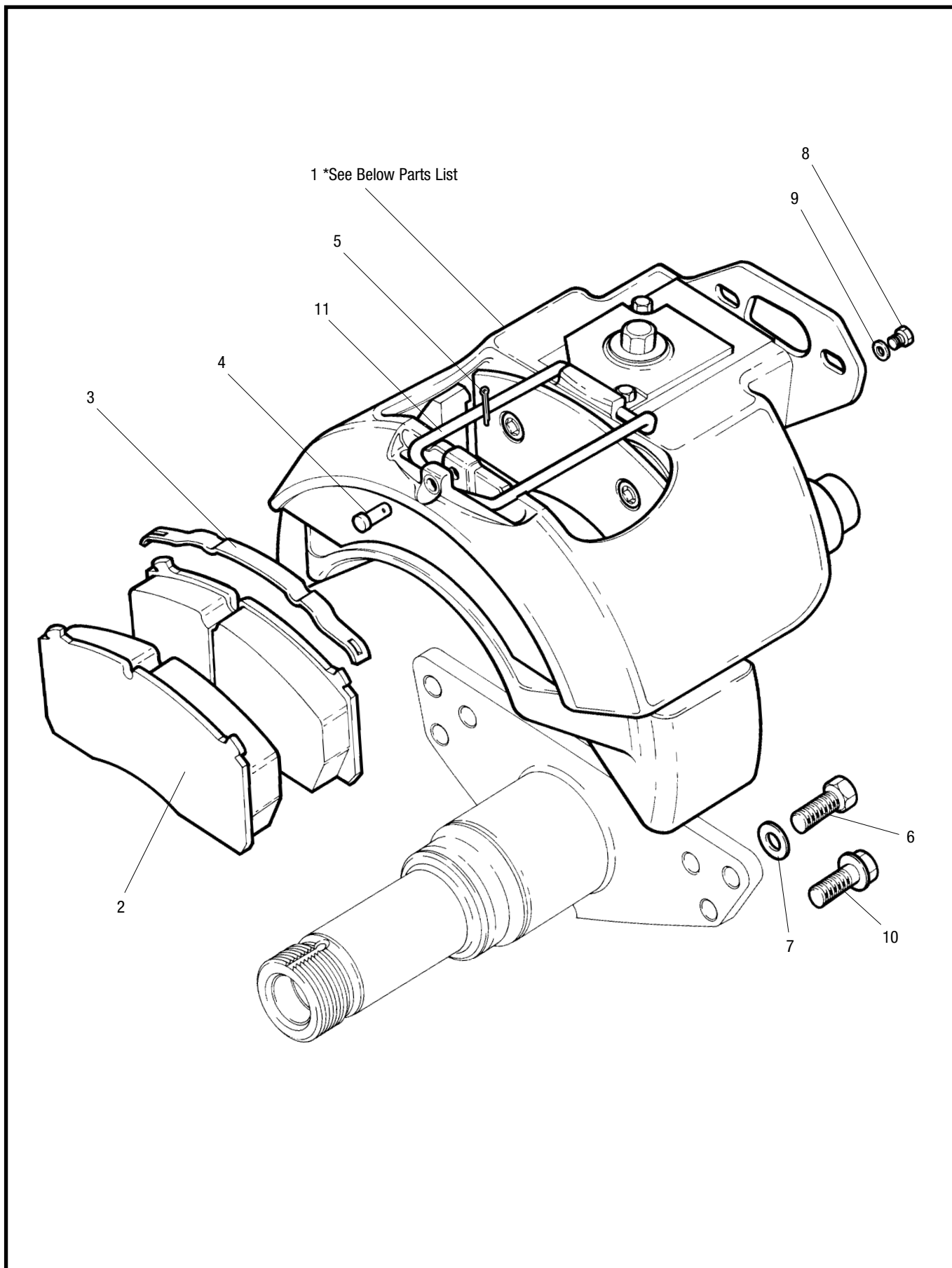
Item	Description	Part Number
1	Screw, Hub Cap	99543001
2	Hub Cap	21224673
3	Hub Cap – Hubodometer	21224904
4	Gasket, Hub Cap	21224759
5	Screw, Pinch Nut	21224864
6	Pinch Nut	21224762
7	Retaining Clip	21224865
8	Retaining Washer	21224669
9	Bearings	99041075
10	Oil Seal	21200321A
11	Hub Assembly	14225425
12	Rotor	21225115
13	Wheel Nut	see table below
14	Wheel Bolt, Steel Wheel	21225086
14	Wheel Bolt, Aluminium Wheel	21220132
14	Wheel Bolt, Universal Steel/Aluminium Wheel, Coated, (use with Dacromat Wheel Nut)	21226340
15	M16 x 65 Rotor Mounting Bolt	21225100
16	Hardened Washer	21224978
17	Pole Wheel Assembly	21225116
18	Sensor Bracket (From June 2000)	21226429
18A	Sensor Block (Pre June 2000)	21213035
19	Spring Clip	21213036
20	Sensor	21213034
21	Screw, Sensor Bracket (From June 2000)	99543002
22	M16 x 60 Flanged Rotor Mounting Bolt – Replaces items 15 & 16 from July 2001	21227263

WHEEL NUTS 32mm ACROSS FLATS			
NEW PART NUMBER	REPLACES EXISTING NUMBERS	TYPE	FINISH COATING
21226395	21218643 / 21218644	STANDARD OPEN	PHOSPHATE & OIL
21226396	21225528 / 21225529	STANDARD OPEN	DACROMET 500 & OIL
21226397	21218645 / 21218621	CLOSED END	PHOSPHATE & OIL
21226484	N/A	CLOSED END	DACROMET 500 & OIL



an ArvinMeritor brand

LM DX195 Parts List





an Arvinkor brand

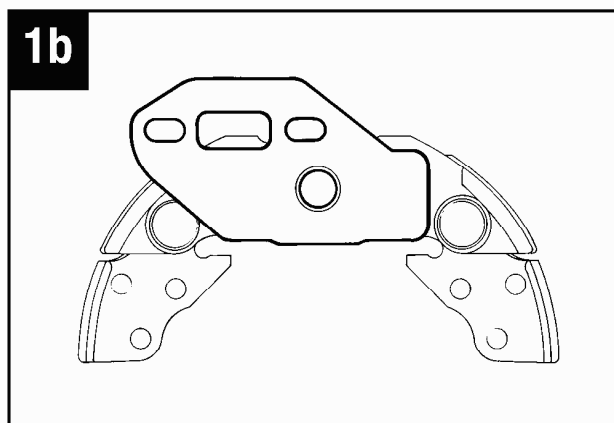
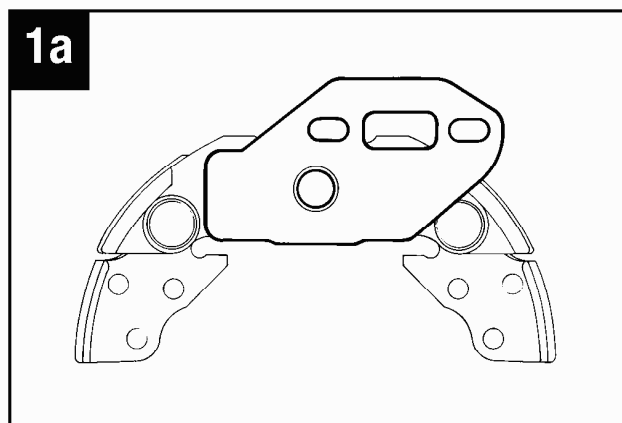
LM DX195 Parts List

LM DX195 Brake Assembly Parts List

Item	Description	Part Number
1a	Brake Assembly DX195 25 (Service Exchange)	15224836SR
1b	Brake Assembly DX195 26 (Service Exchange)	15224837SR
2	Disc Pad Kit	DSB2A**
3	Spring Pad	21224956
4	Retaining Pin	21225038
5	Split Pin	21225046
6	M16 x 45 Caliper Mounting Bolt	21224908
7	Hardened Washer	21224978
8	Plug	21225041
9	Retaining Washer	21225042
10	M16 x 45 Flanged Caliper Mounting Bolt – Replaces Items 6 & 7 from July 2001	21227146
11	Stabiliser Bar	2297J6692

** See LM DX195 Service Kits page 20

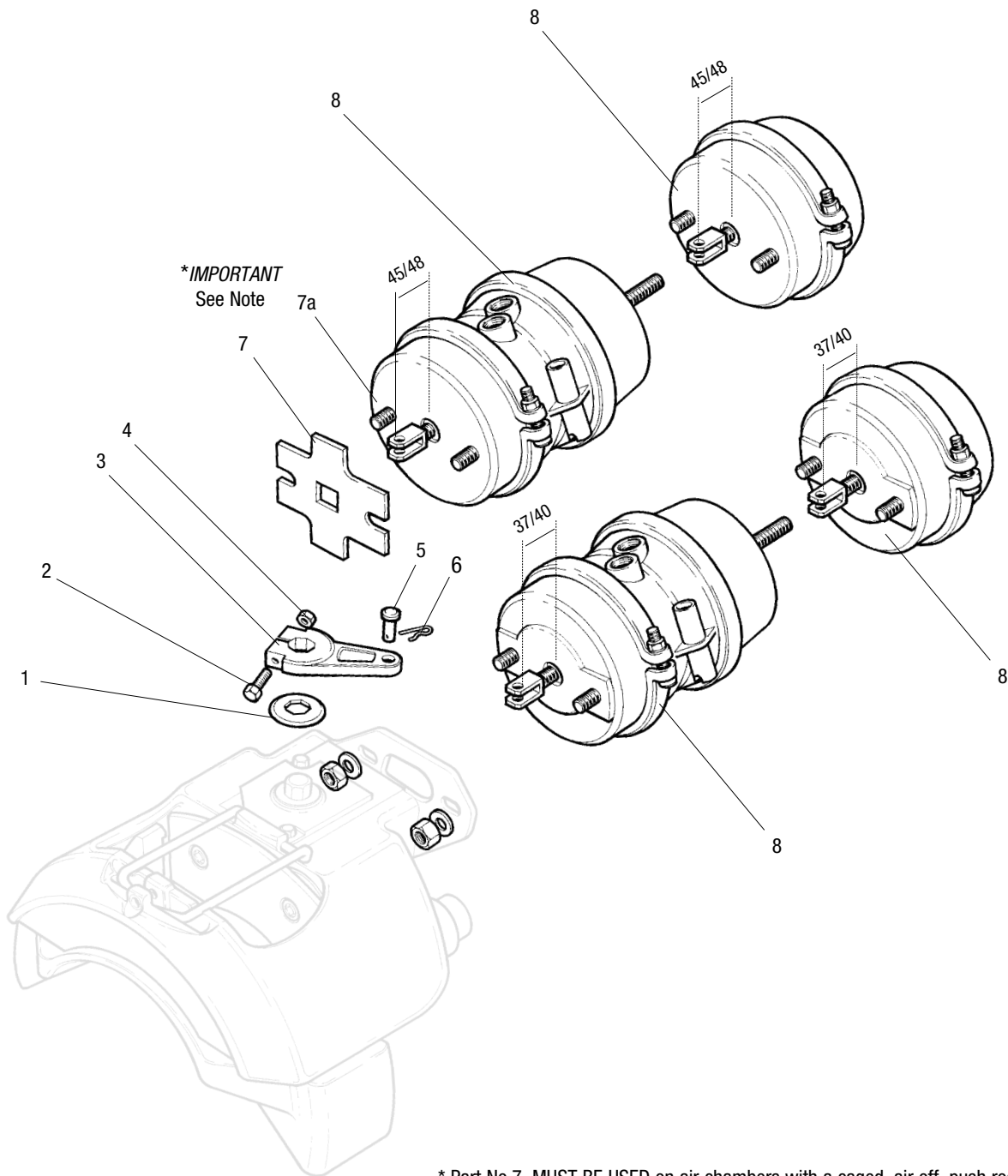
* Brake Assembly Rear View





an ArvinMeritor brand

LM DX195 Parts List



* Part No.7. **MUST BE USED** on air chambers with a caged, air off, push rod length of 45/48mm, measured from the mounting face of the chamber to the centre of the clevis pin hole.

Later models of brake chamber with 37/40mm pushrod length have a formed front housing and **MUST NOT** be fitted with the spacer plate

LM DX195 Parts List

LM DX195 Actuation and Air Chambers Parts List

Item	Description	Part Number	
1	Lever Boot	21225226	
2	Clamp Bolt M8 x 60	21225039	
3	Lever 80mm	21224954	
3	Lever 90mm	21224955	
4	Nut M8	21225040	
5	Clevis Pin	21224985	
6	R-Clip	21224996	
		Part Number 45/48mm	Part Number 37/40mm
7*	Spacer Plate	21224995	None
8	T 24/24	41225080	41225763
8	T 22/24	41225120	41225764
8	T 20/24	41224965	41225765
8	T 18/24	41224966	41225766
8	T 24	41225081	41225767
8	T 22	41225118	41225768
8	T 20	41224963	41225769
8	T 18	41224964	41225770

* Part No.7. Must be used on Air Chambers with a caged, air off, push rod length of 45/48mm.
 It must never be used on chambers with a caged push rod length of 37/40mm.



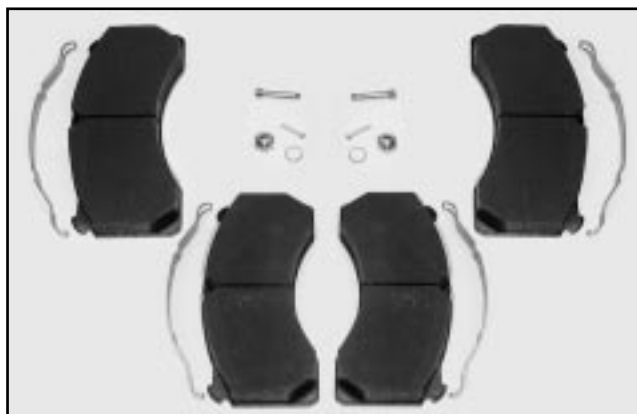
an ArvinMeritor brand

LM DX195 Service Kits



Slide Pin Kit – All Models

DSB7



Disc Pad Kit

DSB2A



Bearing Kit

DSB3



Seal & Gasket Kit

DSB104



Adjuster Kit (LH)
Adjuster Kit (RH)

DSB5L
DSB5R



Adjuster Sleeve & Thrust Plate Kit (LH)
Adjuster Sleeve & Thrust Plate Kit (RH)

DSB6L
DSB6R

With respect to the above kits, except DSB2A disc pad kit.

Meritor does not recommend the service of the brake caliper and will not provide any guarantee of the proper function of the brake caliper once fitted by anyone other than a Meritor Operative.

The above kits have a guarantee that they will fit and be of our normal quality standard, but will carry no service warranty.

Instructions specified in the service manual treat the caliper as a service exchange unit that carries its normal Aftermarket warranty.



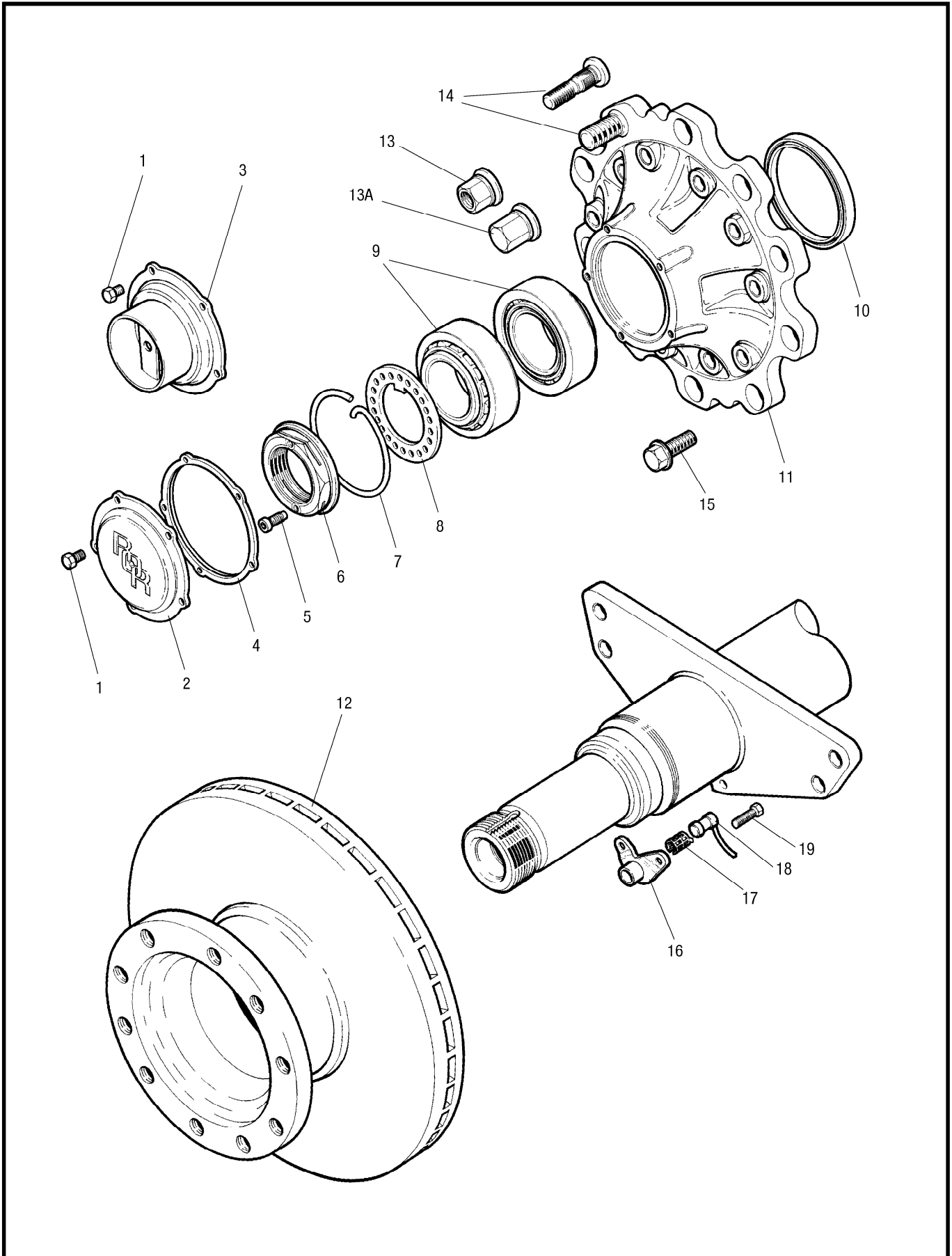
an ArvinMeritor brand

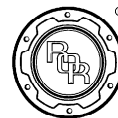
Supplement: LM ELSA 195 Parts List



an ArvinMeritor brand

Supplement: LM ELSA 195 Parts List





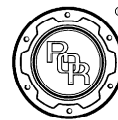
an ArvinMeritor brand

Supplement: LM ELSA 195 Parts List

LM ELSA 195 Hub, Rotor and ABS Parts List

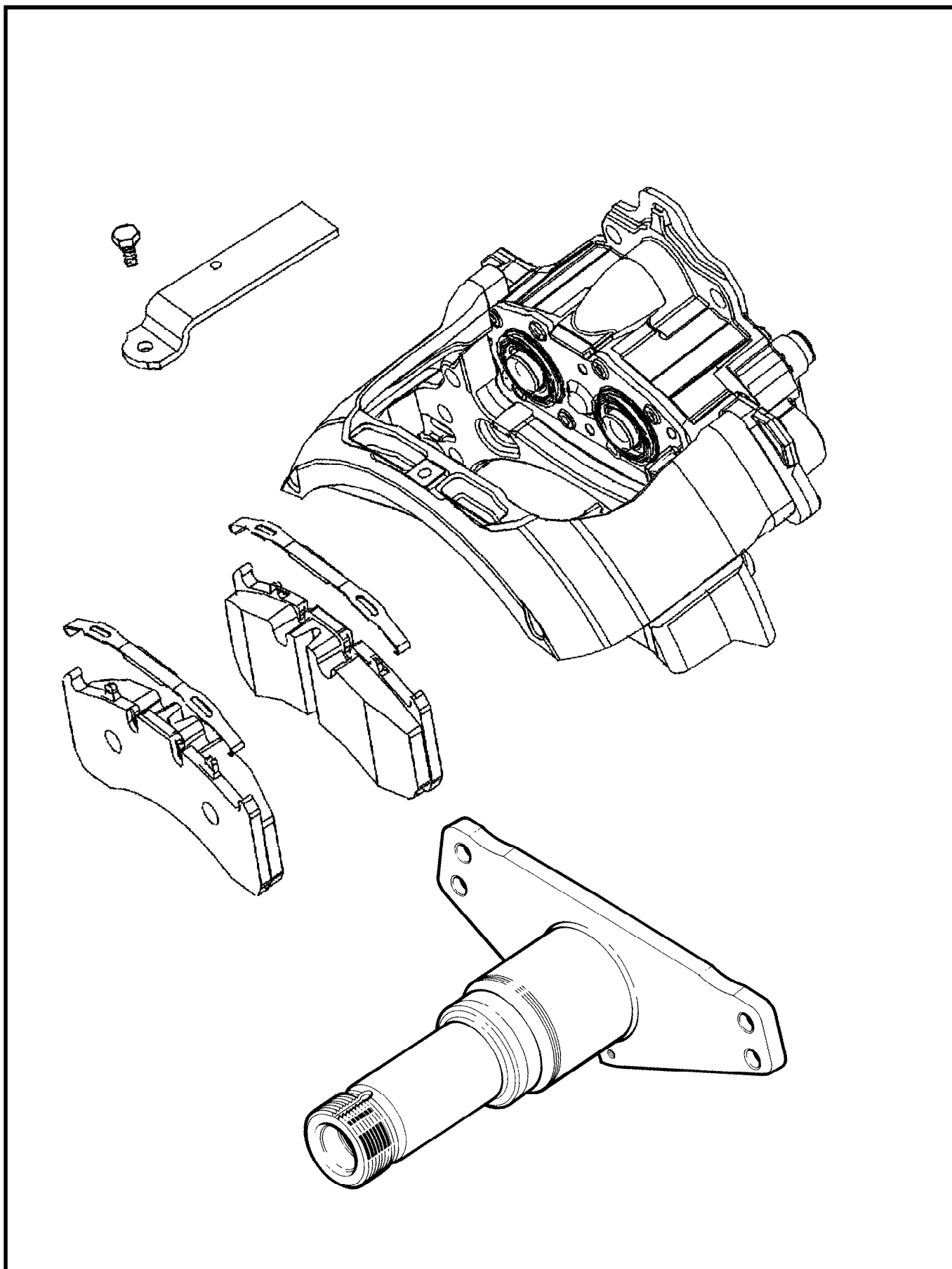
Item	Description	Part Number
1	Screw, Hub Cap	99543001
2	Hub Cap	21224673
3	Hub Cap – Hubodometer	21224904
4	Gasket, Hub Cap	21224759
5	Screw, Pinch Nut	21224864
6	Pinch Nut	21224762
7	Retaining Clip	21224865
8	Retaining Washer	21224669
9	Bearings	99041075
10	Oil Seal	21200321A
11	Hub Assembly	14225085
12	Rotor	21227349
13	Wheel Nut	see table below
14	Wheel Bolt, Steel Wheel	21225086
14	Wheel Bolt, Aluminium Wheel	21220132
14	Wheel Bolt, Universal Steel/Aluminium Wheel, Coated, (use with Dacromat Wheel Nut)	21226340
15	M16 x 60 Rotor Mounting Bolt	21227263
16	Sensor Bracket ELSA195	21227927
17	ABS Spring Clip	21213036
18	Sensor	21213034
19	Screw, Sensor Bracket	99543002

WHEEL NUTS 32mm ACROSS FLATS			
NEW PART NUMBER	REPLACES EXISTING NUMBERS	TYPE	FINISH COATING
21226395	21218643 / 21218644	STANDARD OPEN	PHOSPHATE & OIL
21226396	21225528 / 21225529	STANDARD OPEN	DACROMET 500 & OIL
21226397	21218645 / 21218621	CLOSED END	PHOSPHATE & OIL
21226484	N/A	CLOSED END	DACROMET 500 & OIL



an ArvinMeritor brand

Supplement: LM ELSA 195 Parts List

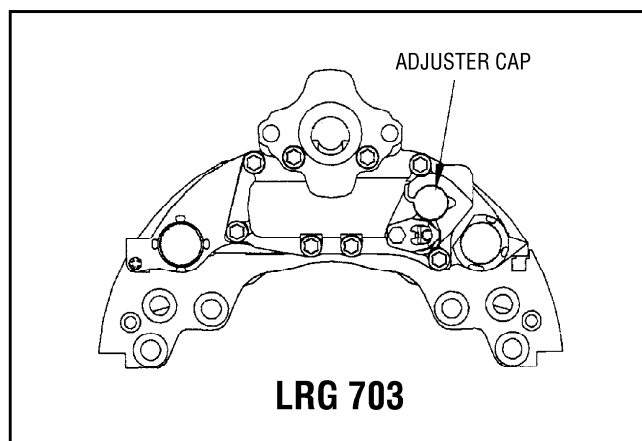
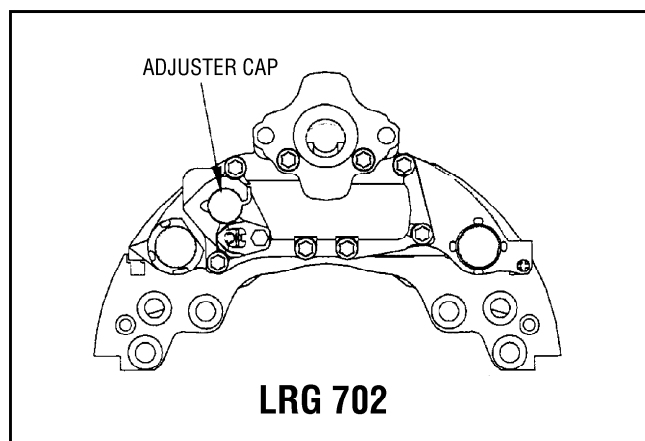


Supplement: LM ELSA 195 Parts List

LM ELSA 195 Brake Assembly Parts List

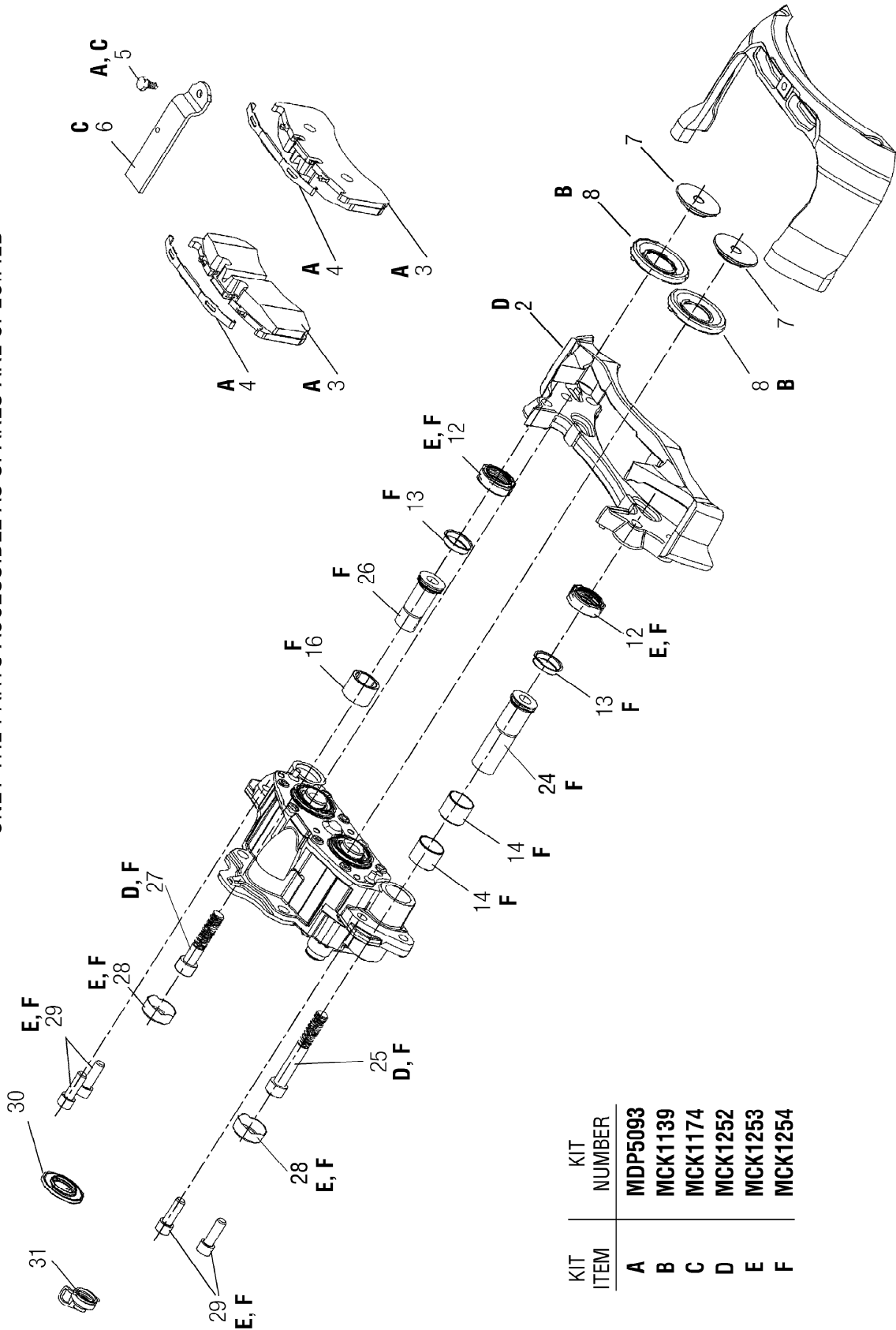
Item	Description	Part Number
1	ELSA 195 Caliper (Service Exchange)*	LRG 702
	ELSA 195 Caliper (Service Exchange)*	LRG 703
2	Pad	} MDP5093
3	Pad Spring	
4	Pad Retaining Plate	
5	Screw (Pad Retaining Plate)	
6	M18 x 1.5 Caliper Mounting Bolt	21227433

* Brake Assembly Rear View



Supplement: LM ELSA 195 Parts List

ONLY THE PARTS ACCESSIBLE AS SPARES ARE SPECIFIED

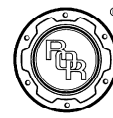


KIT ITEM	KIT NUMBER
A	MDP5093
B	MCK1139
C	MCK1174
D	MCK1252
E	MCK1253
F	MCK1254

Supplement: LM ELSA 195 Parts List

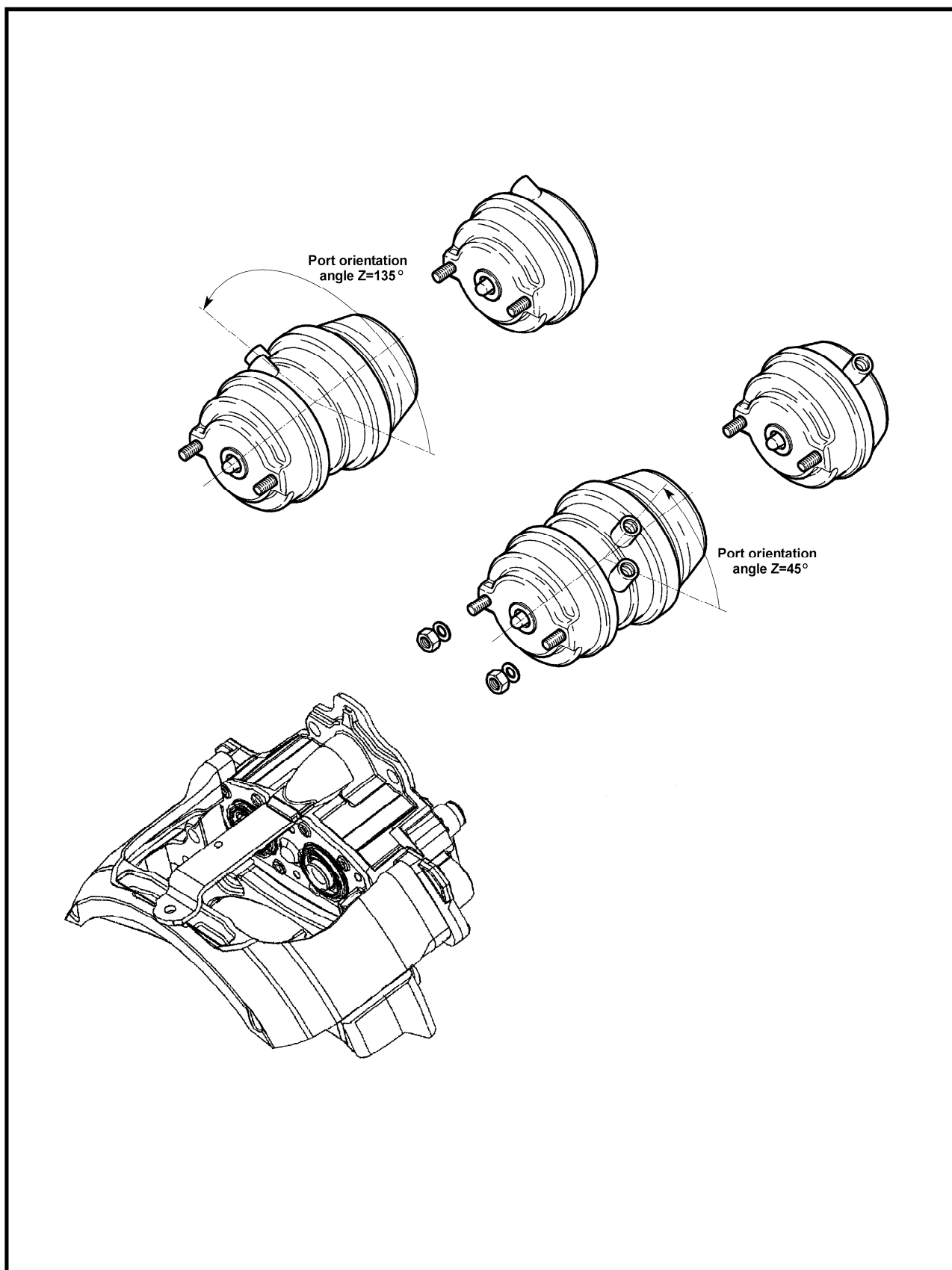
LM ELSA 195 Brake Service Kits

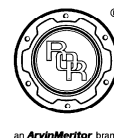
Item	Description	Part Number
A	Brake Pad Kit	MDP5093
3	Pad (4x)	
4	Pad Spring (4x)	
5	Screw (Pad Retaining Plate, 2x)	
B	Piston Head Sealing Kit	MCK1139
8	Piston Dust Excluder (2x)	
	Grease MBG1001 (Not viewed)	
C	Pad Retainer Kit	MCK1174
6	Pad Retaining Plate	
5	Screw (Pad Retaining Plate)	
D	Carrier Kit	MCK1252
2	Carrier	
25	Guide Sleeve Screw (Long)	
27	Guide Sleeve Screw (Short)	
E	Guide Sleeve Sealing Kit	MCK1253
12	Guide Sleeve Dust Excluder (2x)	
28	End Cap (2x)	
29	Bridge Screw (4x)	
	Grease MBG1001 (Not viewed)	
F	Guide Pin Kit	MCK1254
12	Guide Sleeve Dust Excluder (2x)	
13	Guide Sleeve Dust Excluder Retainer (2x)	
14	Guide Sleeve Bush (Round, 2x)	
16	Guide Sleeve Bush (Oval)	
24	Guide Sleeve (Long)	
25	Guide Sleeve Screw (Long)	
26	Guide Sleeve (Short)	
27	Guide Sleeve Screw (Short)	
28	End Cap (2x)	
29	Bridge Screw (4x)	
	Grease MBG1001 (Not viewed)	
	Single Parts	
5	BOLT* [Screw (Pad Retaining Plate)]	68130034
8	TAPPET DUST COVER* [Piston Dust Excluder]	68322651
30	ACTUATOR SEAL RING* [Seal (Actuator)]	68323746
31	CAP* [Adjuster Stem Dust Cover]	68322655
	* Description according ArvinMeritor CVA Price List	



an ArvinMeritor brand

Supplement: LM ELSA 195 Parts List





an ArvinMeritor brand

Supplement: LM ELSA 195 Parts List

ELSA 195 Air Chambers Parts List

Overslung Suspensions FL9000, FL9000NB, FL11000B

Chamber Size	Left Hand Side of Axle (45° Port Orientation)		Right Hand Side of Axle (135° Port Orientation)	
	Chamber Part No.	Caliper Part No.	Chamber Part No.	Caliper Part No.
14 Service	41226792	LRG703	41226793	LRG702
14/16	41226794		41226795	
14/24	41226796		41226797	
16 Service	41226798		41226799	
16/16	41226800		41226801	
16/24	41226802		41226803	
18 Service	41226804		41226805	
18/24	41226806		41226807	
20 Service	41226808		41226809	
20/24	41226810		41226811	
22 Service	41226812		41226813	
22/24	41226814		41226815	
24 Service	41226816		41226817	
24/24	41226818		41226819	
24/30	41226820		41226821	
27 Service	41226822		41226823	
27/30	41226824		41226825	
30/30	41226826		41226827	

Warranty

A comprehensive network of original parts distributors and service stations operate throughout Europe; this is supported internationally with agents strategically placed around the world.

All Meritor replacement parts obtained through original parts distributors are covered by a one year warranty.

For full warranty terms and conditions see 'Meritor Warranty Terms and Conditions' Publication No 4.84.1

Meritor reserve the right to make changes in specifications shown herein or add improvements at any time without notice or obligation.

PARTS SHOWN IN THIS SPARES LIST ARE MADE FROM DRAWINGS IN WHICH COPYRIGHT SUBSISTS. THE MAKING OF COPIES OF ANY OF THESE PARTS IS PROHIBITED.

© Meritor HVS Limited



The high quality assurance management systems applied by Meritor are endorsed with the awarding of ISO 9001, Lloyd's Register Quality Assurance.

ArvinMeritor Inc.

World Headquarters

2135 West Maple Road
Troy, Michigan 48084
U.S.A.
Telephone: +1 248 435 1000

Meritor HVS Limited

Commercial Vehicle Systems

Rackery Lane, Llay
Wrexham LL12 0PB
U.K.
Telephone: +44 (0)1978 852141
Fax: +44 (0)1978 856173

Meritor HVS (Helmond) B.V.

Commercial Vehicle Systems

92 Vossenbeemd, Postbus 255
5705 CL, Helmond
Holland
Telephone: +31 (0)492 535805
Fax: +31 (0)492 547175

Meritor HVS (Mitry-Mory) S.A.

Commercial Vehicle Systems

Z.I. du Moulin à Vent
9 rue des Frères Lumière
77290 Mitry-Mory
France
Telephone: +33 (0)1 64.27.44.61
Fax: +33 (0)1 64.27.30.45

Meritor HVS (Verona) s.r.l.

Commercial Vehicle Systems

Via Monte Fiorino, 23
37057 San Giovanni Lupatoto
Verona
Italy
Telephone: +39 045 8750399
Fax: +39 045 8750640
Fax: +39 045 8750513

Meritor HVS (Barcelona) S.A.

Commercial Vehicle Systems

Ctra. Granollers - Sabadell Km. 13,3
Poligono Argelagues
08185 Lliçà de Vall
Spain
Telephone: +34 (9)3 843 95 68
Fax: +34 (9)3 843 83 59

Meritor Automotive (Pty) Limited,

Commercial Vehicle Systems

35 Director Road, Spartan Ext 2
PO Box 872, Isando,
1600 R.S.A.
Telephone: +27 (0) 11 974 1535
Fax: +27 (0) 11 974 1728

For further information contact

Meritor HVS Limited

Commercial Vehicle Systems

Rackery Lane, Llay
Wrexham LL12 0PB
U.K.
Telephone: +44 (0)1978 852141
Fax: +44 (0)1978 856173

www.arvinmeritor.com

© Copyright 2002

Meritor Automotive

All rights Reserved

Publication 4.89.2B

Descriptions and specifications were in effect at the time of publication and are subject to change without notice or liability. Meritor reserve the right to make design improvements, change or discontinue parts at any time.

ArvinMeritorTM